

# Technical information Porter Electric Power

ENGINE	
Engine	Separate excitation direct current brush engine
Fuel system	Electric
Nominal power	10,5 kW 96 Volt
Nominal torque	55 Nm at 1.800 rpm
Peak torque	215 Nm
Operating current	124 A
Insulation Class	(F) Tmax=100°C ±15°C
Environmental Protection Rating	IP20
Max speed	55 km/h
Max range	up to 110 km

TRACTION BATTERIES	
Type	Lead Gel
Battery charger input voltage	220 V
Nominal energy	17 kWh
Battery charger type	On-board
Battery charger power	2 kW
Time for complete charge	8 hours
Max recharge cycles (estimate)	800

GEARBOX	
Type	Continuously variable transmission
No. of ratios	Forward and reverse

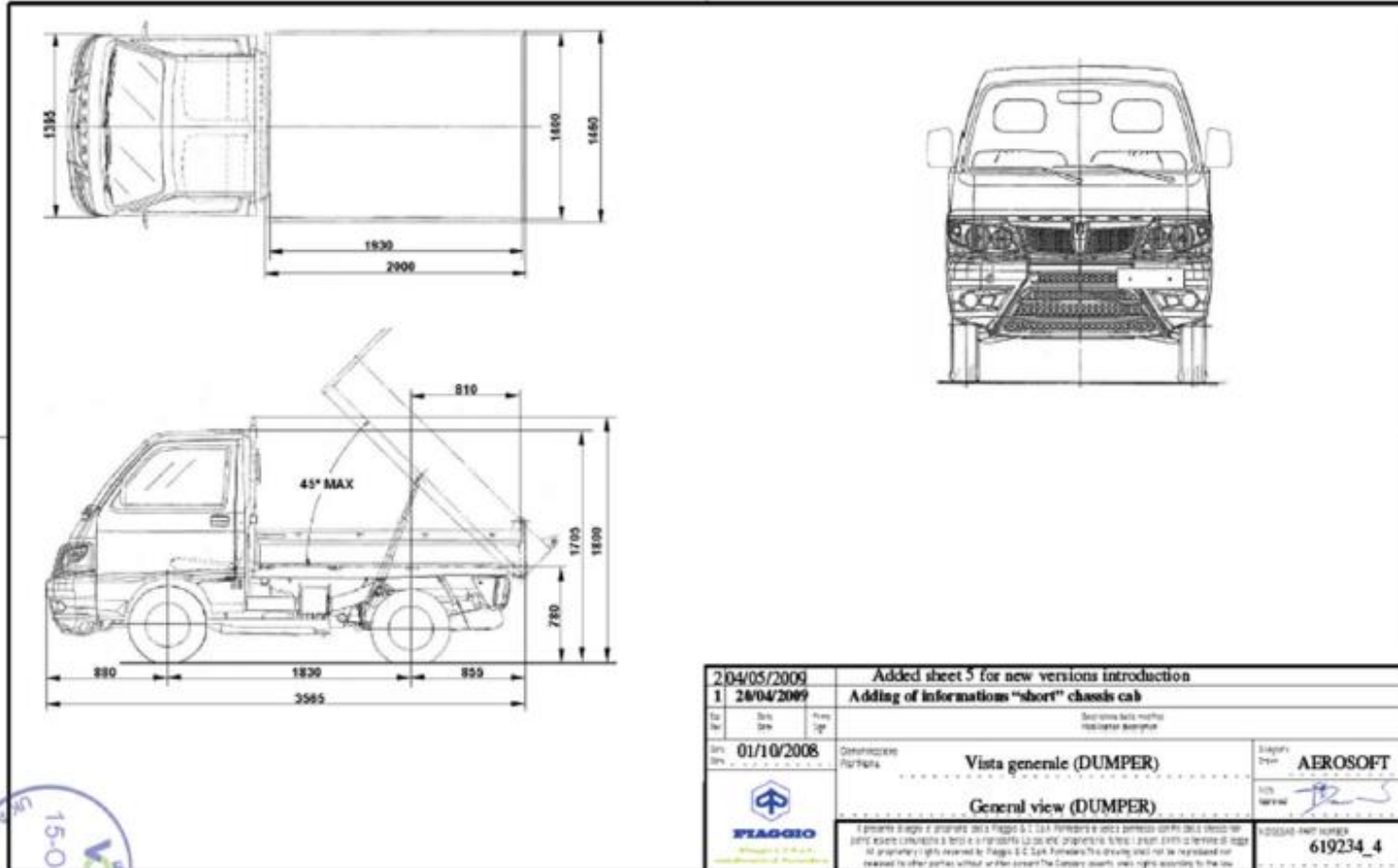
OTHER CHARACTERISTICS	
Maximum gradient fully loaded	18%
Cooling system	Air

DIMENSIONS	Chassis-cab	Long Deck	Tipper Deck	Van	Window van
Length (mm)	3.555	3.775	3.565	3.400	3.405
Width (mm)	1.395	1.460		1.395	
Height (mm)	1.705	1.705	1.800	1.870	
Wheelbase (mm)	1.830	1.830		1.810	
Front overhang (mm)	880				
Rear overhang (mm)	845	1.065	855	710	
Front track (mm)	1.205			1.210	
Rear track (mm)	1.220				
Load deck (mm)	-	1.400x2.325	1.400x1.930	1.210x1.910	1.910x920
Gross Vehicle Weight	1,8 ton				
Payload	*	520	450	470	435

*\*dependent on limitations of special equipment configuration*

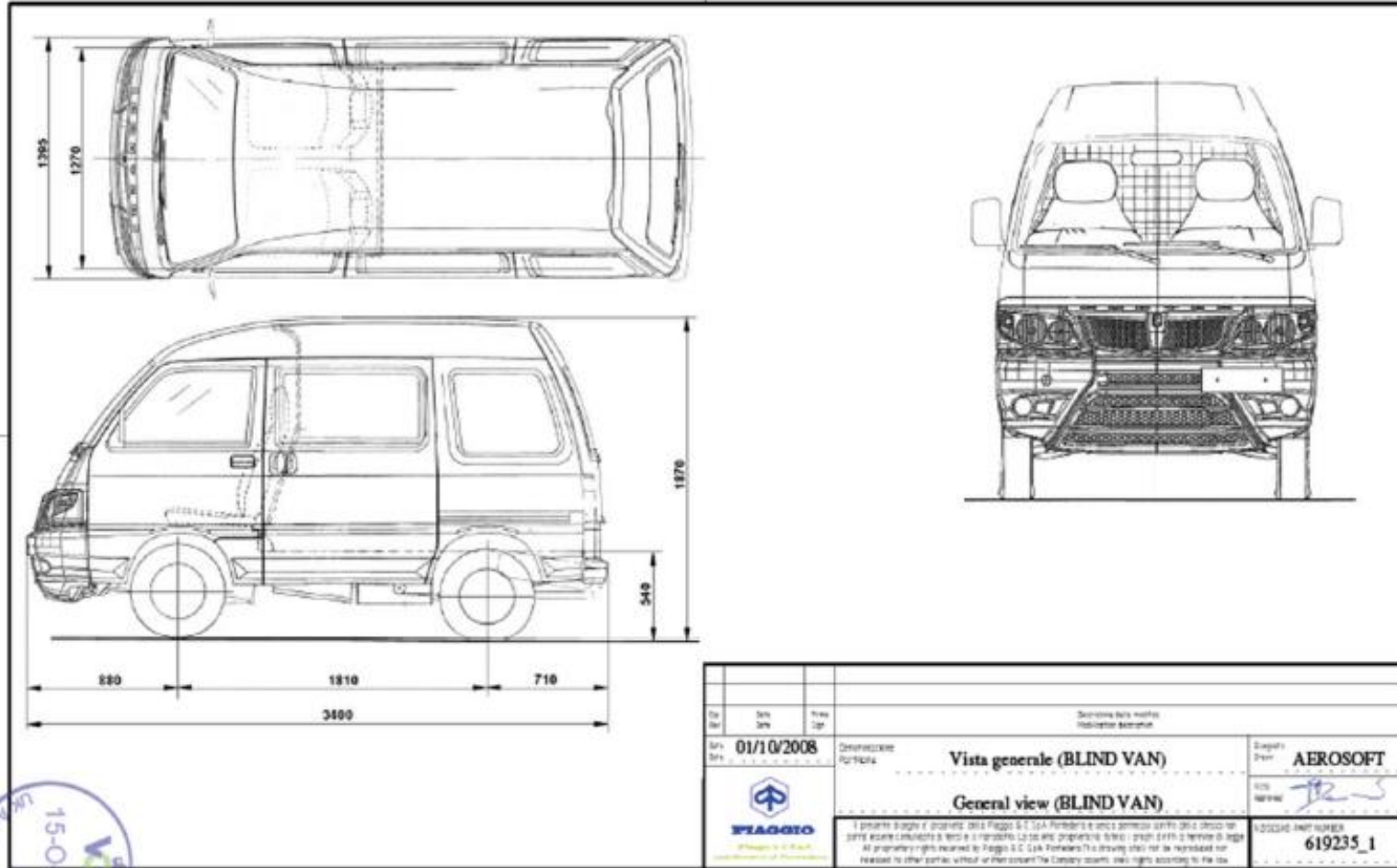


# Porter Electric Tipper Deck



15-01-0

# Porter Electric Van





# Porter Electric Chassis-cab

